



FaSMed

Meeting with Schools
March 26th 2015

Questions

- What did you do?
- How was the technology used?
- What were the opportunities for formative assessment?
- How were the opportunities used?
- What have you learned?

Research questions

- How do teachers **process** formative assessment data from students using a range of technologies?
- How do teachers **inform their future teaching** using such data?

Formative assessment

Key areas of interest:

- Building on student's prior knowledge
- Identifying and responding to students' conceptual difficulties
- Using questioning
- Increasing student collaboration
- Students becoming assessors.

Role of technology

- A direct replacement for paper-based methods?
- A replacement with benefits?
- A replacement with disadvantages?
- A method that changes the process of teaching and learning?

Planning with technology

- What information does the technology provide?
- How will it be used?

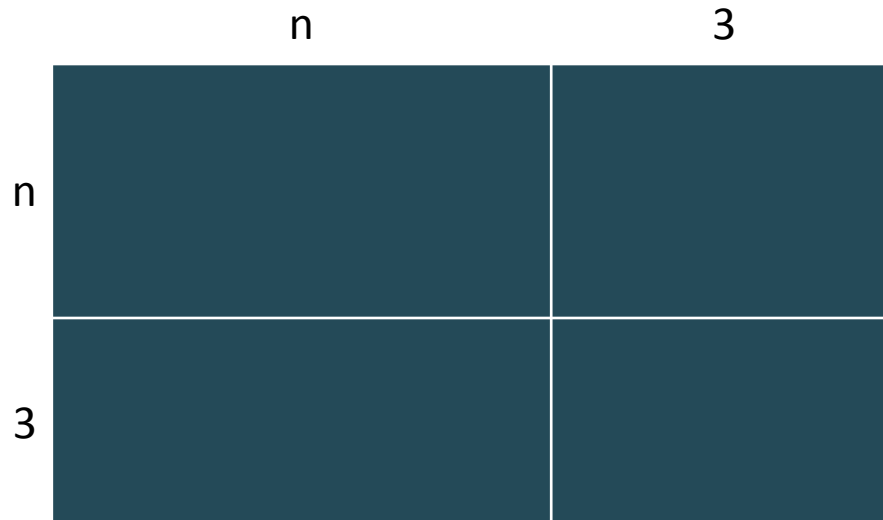
Examples:

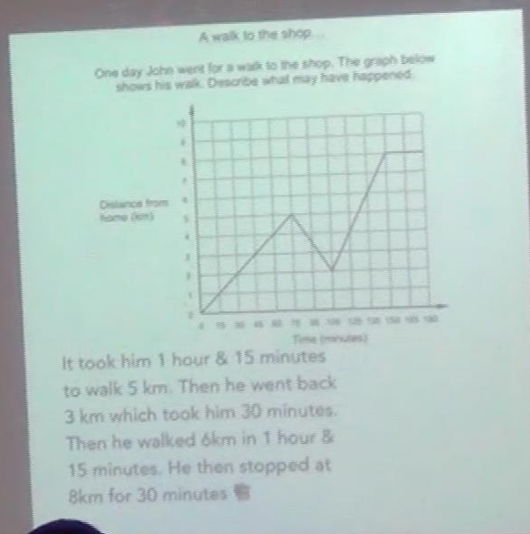
Profile of students' responses to diagnostic questions

Reasons for students' choice of response

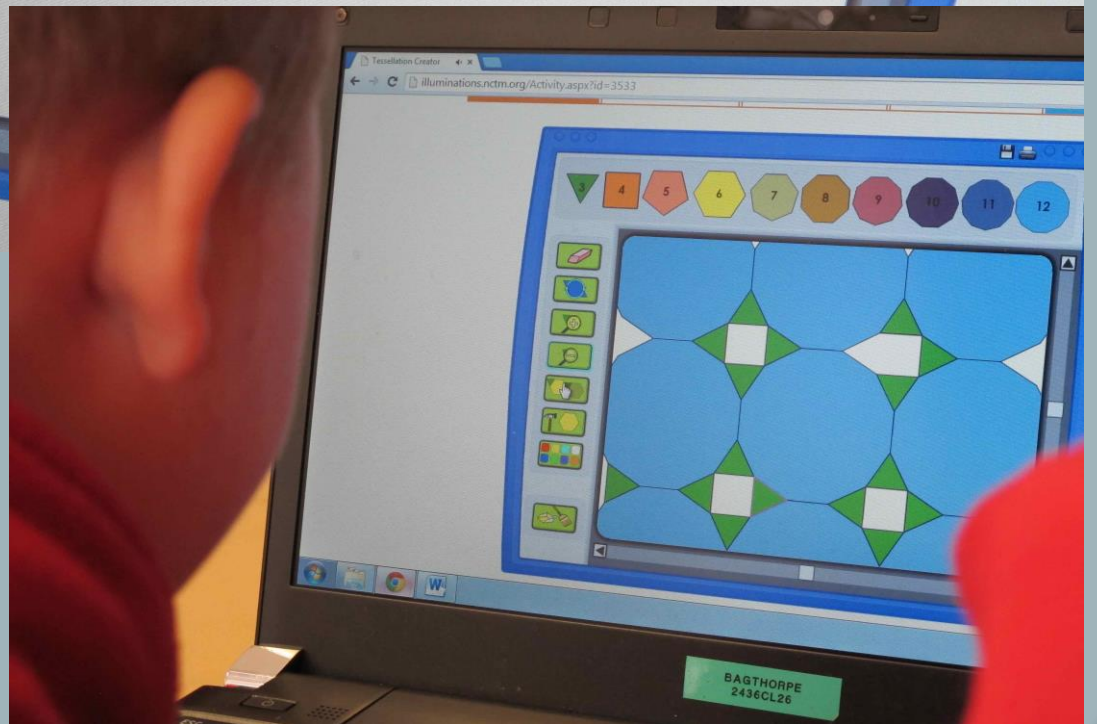
Students' responses to tasks in class

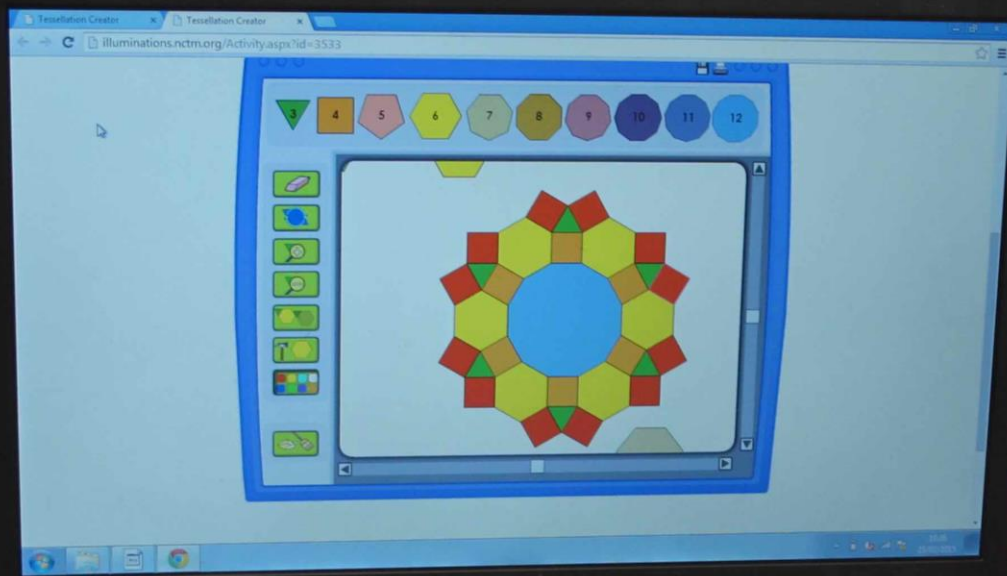
Write down an expression for the
area of this shape





Show b
↓
Distance
↓
has





Izzy and Harry:!!
This is amazing
It is awesome

It is awesome
IzzyK.

😊
Cooling
-Jessie

OWKOME
!!



Hi

HI

Hi

Lol

NO content

Planning for formative assessment

- What responses from students may arise?
- What are the common misconceptions underlying these responses?
- What questions will you ask to deal with these?